



CLOSING GUIDE

Procedure &
advise

CLOSING MANUAL



This manual must be followed correctly to maximize your chances of getting through the winter.

SCAN TO SEE
THE CLOSING SUPPORT VIDEO



I. WARNINGS

If you wish to take advantage of our pool closure service, **you MUST complete the online reservation request form available on our website**

<https://www.piscine-quebec.com/reservation-fermeture>



NEVER EMPTY YOUR POOL WITHOUT TELLING US.



**IN FALL, LEAVE THE PUMP RUNNING 24 HOURS A DAY
DO NOT SWITCH OFF BEFORE WINTERIZING THE POOL**



- You must contact us before any winterization or any emptying of the pool, otherwise your guarantee will no longer be valid.
- Any dewatering well buried or not visible will cause the cancellation of the guarantee.

Give this closing manual to the person in charge of closing your pool so that the person can carefully follow the steps of the closing process. The person in charge can contact your branch's After-Sales Service of your local branch if they have any questions.

Before emptying your pool, you must check your dewatering well.

The water in the dewatering well **must always be 2 feet (60 cm) below the water level** in the winterized pool. Otherwise, drain the water using a sump pump or an above ground pump.

IMPORTANT

After wintering, if there is heavy precipitation, check your dewatering well and empty it if necessary, **as long as the pool water has not frozen.**

Piscine Okéanos Québec asks all its customers to leave a **sump pump** (with float on vertical axis) **permanently in the dewatering well** so that the water in the ground is automatically always drained **as long as the pool water has not frozen.**



Never lower the pool water level after winterizing without first checking your dewatering well.



Don't forget to position the skimmer plug on the front.



THE POOL WATER LEVEL AFTER WINTERIZING MUST BE RAISED TO THE MIDDLE OF THE SKIMMER OPENING (AS IN THE SWIMMING SEASON).

REQUIRED MATERIAL:

A. Dry and wet vacuum that sucks and blows air (Shop-Vac type) and/or compressor



B. 2 water return screw caps with o-ring: size 1½"



C. 1 X 2" skimmer screw cap with o-ring



D. Gizmo



E. Antifreeze liquid 2 x 4 liters (-51° Celsius)



F. Teflon



G. Rubber plugs for massage jets



H. A 4-foot tube of foam ¾ inches in diameter (an expansion coil)



I. Skimmer plug



J. Treatment kit to maintain the balance of your pool water during winter

OPTIONAL:

K. Mesh leaf net for the autumn to avoid pool stains and facilitate leaf collecting



II. PROCEDURE

ALWAYS CHECK THE DEWATERING WELL BEFORE LOWERING THE WATER LEVEL IN THE POOL

IT MUST ALWAYS BE EASILY ACCESSIBLE.

IF THIS IS NOT THE CASE, YOUR WARRANTY IN THE EVENT OF A PROBLEM WILL BE VOID.



1. Lower the water level just below all jets (water return jets and massage jets if you have any) while checking that the level of the dewatering well remains 60 cm (2 feet) lower than the water level in the pool.

To drain the water, use the pool vacuum cleaner and connect it directly to the skimmer, as when sweeping, but this time put the filter in **“WASTE”** mode. To do this, remove the basket, put the vacuum hose in the hole that is furthest from the pool in the skimmer and put the filter handle on **“WASTE”** and drain to the street.



Don't drain the water around the pool. This could increase the water level in the dewatering well and damage your pool.

2. Once the water is drained, disconnect the pump electrically.
3. Empty the filter tank by unscrewing the nut at the bottom of the filter, completely. Put the nut away, do not close it again once the filter has been emptied.



4. Remove the glass jar (*and its seal*) and the manometer and store them in a place with above 0° Celsius.
5. Set the filter handle to **“WINTER”**.
6. Unscrew all the white rings from the pipe connections at the filter head and at the pump, remove the seals from the valves and set them aside.
7. Drain the pump (turn it over completely to evacuate the water that cannot be vacuumed), put some antifreeze (E.) inside (about 1 inch).



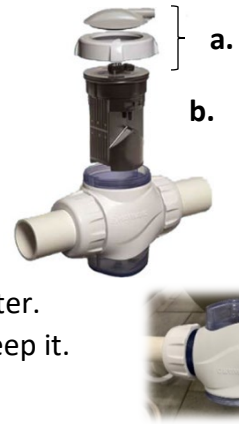
If the pump is in a shed or garage, don't move it, if outside, store it inside for the winter.

SALT SYSTEM OPTION (case/cell on the filtration):

8. For filtration with a salt system:

❖ SALT & SWIM :

- a. Unscrew the clamping ring and undo the electrical connector on the cell.
- b. Remove the cell from its case.
- c. Clean it with a salt cell cleaner and store it in a warm, dry place for the winter.
- d. Then turn the cell case upside down to drain the water from the cell and keep it.



❖ AQUA RITE:

- a. Unplug the cell from the computer.
- b. Unscrew the cell from the piping.
- c. Clean it with a salt cell cleaner and store it in a warm, dry place for the winter.



❖ MC50MINI/ MC85MINI/ MC50JUST :

- a. Disconnect the power supply and connectors on the cell.
- b. Remove the case, disconnecting the flow sensor.
- c. Clean it with a salt cell cleaner and store it in a warm, dry place for the winter.



❖ ICHLORE 15 :

- a. Unplug the cell from the computer.
- b. Unscrew the cell from the piping.
- c. Clean it with a salt cell cleaner and store it in a warm, dry place for the winter.



HEAT PUMP / GAS WATER HEATER OPTION:

9. For those who have a heat pump or a gas water heater:
 - a. Unscrew the connections at the back of the unit.
 - b. Vacuum with the Shop-Vac in the bottom opening by closing the top opening with the palm of your hand a few times for better suction.
 - c. Tilt the heat pump (*not required in a case of gas water heater*) slightly backwards to direct the water towards the outlet.
 - d. While still vacuuming in the bottom opening, pour antifreeze into the top opening. This way, if there is some water left at the bottom of the heat pump, it will not freeze.

Be sure to empty the piping connecting to the heat pump before screwing it back on.

THE POOL:

10. Place the skimmer plug on the front (skimmer opening inside the pool) and tap it with the palm of your hand until it's firmly seated.



11. Pour your antifreeze liquid (E.) into the opening closest to the pool wall (bottom drain) until it comes out through the drain grate at the bottom of the pool. *Pour out quickly, otherwise it will not enter the bottom drain, but rather dilute in the skimmer water.* Wait 1 minute and pour out another 1.5 liters of antifreeze.

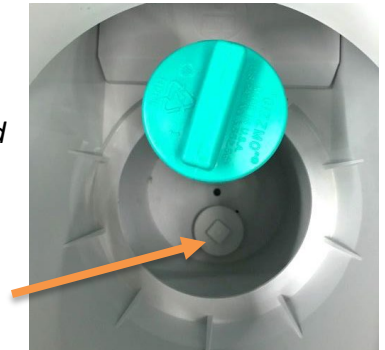
12. Cut a small section of the foam tube (2 inches will be enough) and save it for the next step. Put the longest of the foam tubes (H.) deep into the hole of the bottom drain and make a loop or knot at the end so that it will stay in the hole of the drain (*quite difficult because the foam always tends to rise*).



13. Put teflon on the screwed part of your gizzmo (D.) and screw it into the bottom of the skimmer, this will prevent the foam from rising and block the antifreeze. Screw the gizzmo properly (by applying a little pressure). To check if the gizzmo is screwed in correctly, move it from right to left (if the gizzmo is not screwed in correctly, it will jump out of its thread).

14. Vacuum the water in the skimmer by using the Shop-Vac (A.), there must be no more water left in this pipe, which is connected to the pool pump. The best way, to do this, is to vacuum on the skimmer side. Once empty, vacuum on the skimmer side and pass antifreeze through the filtration side. Stop when you see antifreeze in the skimmer hole.

15. Screw a 2" plug (C.) into this hole (*check for the presence of the required gasket*). This cap must be a screw-on cap.



16. Pour antifreeze directly into the skimmer (a 2" at the bottom will be sufficient). Close the skimmer cap and close the small hole at the top with the small piece of foam tube reserved earlier (at step 12) to prevent rainwater from entering the skimmer.



17. Unscrew the water returns (3 pieces) **without unscrewing the wall feedthrough.**

18. Blow the return line (filtration side). Plug one of the two water returns while blowing, then reverse the operation to dry the elbow and tee buried in the gravel, repeat the operation until there is no more water in the pipe.

19. Pour antifreeze in the water return line on the filtration side and blow it through the piping until it comes out of the water returns.

20. Plug the water returns with your 1½" return plugs. (B.)



LIGHTS OPTION:

21. For pools with one or more lights:

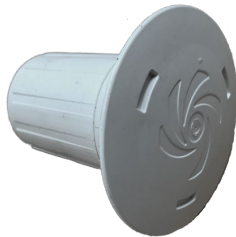
- ❖ **MINI-BRIO 2:** Nothing to do. The light will stay in place.
- ❖ **MINI LED :** Nothing to do. The light will stay in place.
- ❖ **LACUS :** Nothing to do. The light will stay in place.



- ❖ **BRIO PLUG IN POOL and GAIA PLUG IN POOL:**



Remove the light by turning it and put the winterization cap (L.) in its place. The winterization light cap was left with you at the time of the pool installation and is therefore not part of the winterization kit *(If you have lost it, you can get another one at one of our branches).*



L.



OTHER OPTIONS :

22. If there is a **WATERFALL** or any other **HYDRAULIC CIRCUIT** (overflow tanning ledge...), disconnect and purge this equipment (suction and blowing). Add antifreeze to the piping lines (same procedure as for the water return line).

OPTIONAL MASSAGE JETS:

23. If massage jets are installed, unscrew them.

24. Blow out the jets from the filtration by plugging the majority with the plugs and alternating the plugged jets until there is no more water in each jet.

25. Vacuum in the jets while alternately covering the ones that are not vacuumed, to completely empty the water from each nozzle and drain the water distribution and air distribution manifold. Put antifreeze in the line (filtration side) and blow out the line so that antifreeze comes out of the massage jet.

26. Remove the cap on top of the venturi by pulling or prying with a flathead screwdriver.



27. Unscrew the venturi head.



28. Then block the anti-return ball with a small screwdriver and pour antifreeze into it until it comes out of the massage jets. As soon as the first jet flows the same color of your antifreeze, plug it and continue the manipulation by filling all the pipes.



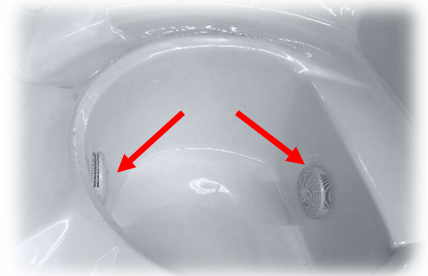
29. Plug the massage jets with the rubber plugs (G.) and make sure that the rubber is flush with the jet and that the wing nut is vertical, tighten it firmly.



OPTIONAL OVERFLOW SPA:

30. For the OVERFLOW SPA option, **follow steps 27 to 31** of the MASSAGE JETS option on **previous page**.

31. Remove the bottom drain grates with a *crosshead* phillips screwdriver and blow out the drain pipe from the filtration.



32. Once most of the water has been removed, while still blowing, block one of the drains with the plug until there is no more water, then alternate with the second drain. Once there is no more water, blow antifreeze from the filtration until it comes out of both drains and close it with the rubber plugs (**G.**) and make sure that the rubber is flush with the jet and that the wing nut is vertical, tighten it firmly.



FINAL STEPS:

33. Open the closure kit. Generally, regardless of the brand, it will contain 2 products to be distributed evenly, directly into the pool water. Many kits contain a floating device, which is not mandatory, considering that the product inside will dissolve very quickly, often only a few hours after it has been deposited in the water.

34. Once you have completed the closing, raise the water level in the middle of the skimmer same as in swimming season.

* **If the spa option is installed**, fill it until it overflows.

35. Use the skimmer basket to store all the parts that will be kept warm.



IT'S IMPERATIVE THAT THE POOL WATER LEVEL BE RAISED TO THE MIDDLE OF THE SKIMMER (AND IN THE SPA IF THIS OPTION IS PRESENT) AT THE END OF THE CLOSURE TO REDUCE THE RISK OF POOL LIFLING.

THE WARRANTY DOESN'T COVER DAMAGE DUE TO POOL HEAVE CAUSED BY A HIGHER WATER LEVEL IN THE GROUND (DEWATERING WELL) THAN THE WATER LEVEL INSIDE THE POOL.

POST-CLOSURING INSPECTION:

➤ PRESENCE of a pool coping (bullnose):

Just before very low temperatures freeze the water:

- ✓ Check the level of the dewatering well and empty it with a sump pump or above ground pump if necessary.
- ✓ It's possible to lower the water level to the middle of the skimmer.

This will prevent the water from pressing on the pool coping as it expands with the frost.



A properly installed coping won't lift off, even if the water level in the pool is higher and the ice applies pressure when it expands.

NO pool coping (bullnose):

If there is a lot of rain once the pool is closed:

- ✓ Let the water level rise.
- ✓ If the pool is overflowing, let it overflow.
- ✓ Check the level of water in the dewatering well and empty it with a sump pump or above ground pump if necessary.



Never lower the water level of the pool after closing without first checking the dewatering well.

IT IS VERY IMPORTANT TO CHECK THE DEWATERING WELL AND KEEP THE WATER LEVEL ALWAYS LOWER THAN THE POOL LEVEL. TO AVOID ALL RISKS, WE RECOMMEND PLACING A SUBMERSIBLE PUMP IN YOUR DEWATERING WELL UNTIL EVERYTHING FREEZES TO MAINTAIN A WATER LEVEL LOWER THAN THE ONE THE POOL.



NOTE: If there are a lot of leaves, it's possible to put a net (K.) on the pool to facilitate pick-up of the leaves. This will prevent the formation of stains on the pool due to the tannin of the leaves.

ONCE THE WATER HAS FROZEN, DON'T LOWER THE WATER LEVEL IN THE POOL AND DON'T BREAK THE ICE.

REMOVE THE SUMP PUMP FOR THE WINTER AND DON'T TOUCH THE DEWATERING WELL AGAIN UNTIL THE THAW.



If you can't find the equipment required for the closing of the pool, please contact us.